

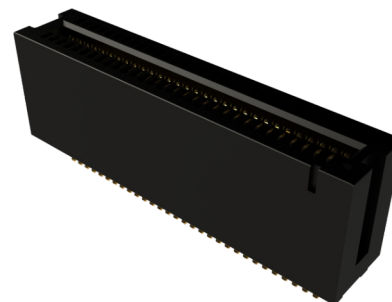
# 802 Series

Card Edge Connectors .050" (1.27mm) Pitch



## Features

- .050" (1.27mm) contact spacing
- Accepts .062" (1.57mm) nominal thickness P.C. board
- Insulator body, .551" (14mm) high
- Contact termination options include P.C. tail, 90 degree bends, extender board bends, and SMT tails
- Dual row configurations
- RoHS Compliant

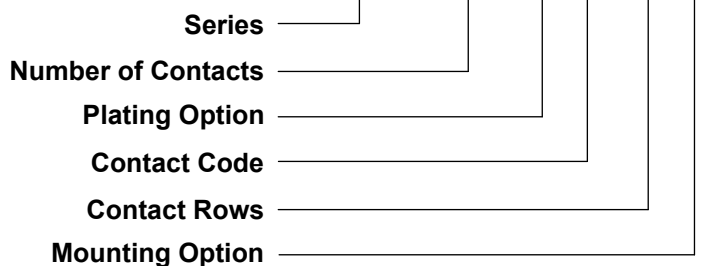


## Specifications

Insulator Material	UL 94V-0 Thermoplastic PPS, Black Color
Contact Material	Copper Alloy
Contact Plating	Selective Gold Plating on mating area with Tin Plating on Solder Tail and Nickel underplating all over
Current Rating	1 Amp
Contact Resistance	30 Milliohms maximum
Dielectric Withstanding Voltage	500 V AC rms 60Hz for 1 minute
Insulation Resistance	1000 Megaohms minimum
Operating Temperature	-55°C to +105°C
Insertion Force	230 grams maximum per contact pair
Withdrawal Force	15 grams minimum per contact pair

Example Part Number:

**802-060-256-201**



\*\*\* Please see next page for options

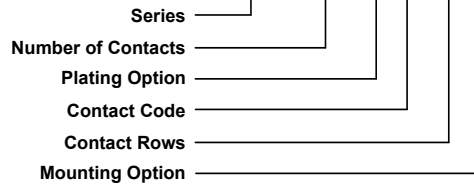
# 802 Series

Card Edge Connectors .050" (1.27mm) Pitch



Example Part Number:

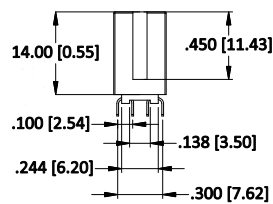
**802-060-256-201**



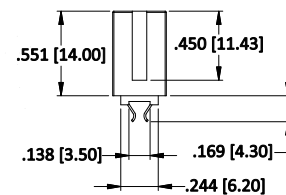
Series			
802			
Number of Contacts			
004 . . . 124 (Note 1)			
Plating Option	Description		
2	Gold Flash		
3	15μ" of Gold		
6	30μ" of Gold		
Contact Code	Description	Tail Size	Tail Length "G"
21	P.C. Tail	.018" x .012" (0.46mm x 0.30mm)	.100" (2.54mm)
56	Extender Board Bend	.018" x .012" (0.46mm x 0.30mm)	
58	90 Degree Bend	.021" x .012" (0.55mm x 0.30mm)	.114" (2.90mm)
99	SMT Tail	.021" x .012" (0.55mm x 0.30mm)	
Contact Rows	Description		
2	Dual Row		
Mounting Option	Description		
01	Flush Mounting (No Mounting Lug)		
05	Mounting Pegs (only for contact code 99)		
06	With Boardlock (only for contact code 99)		

### Ordering Notes:

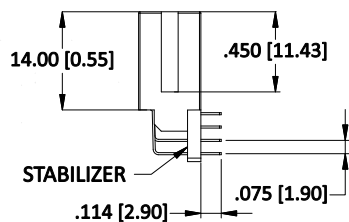
1. Refer to table on Page 4 for available positions.
2. IR reflow soldering applicable for all contact codes on the series.



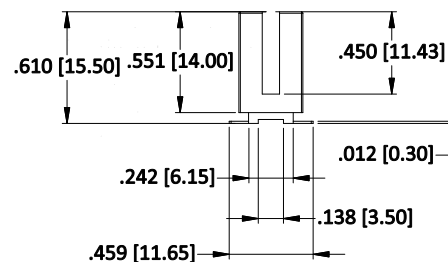
CONTACT CODE 21



CONTACT CODE 56



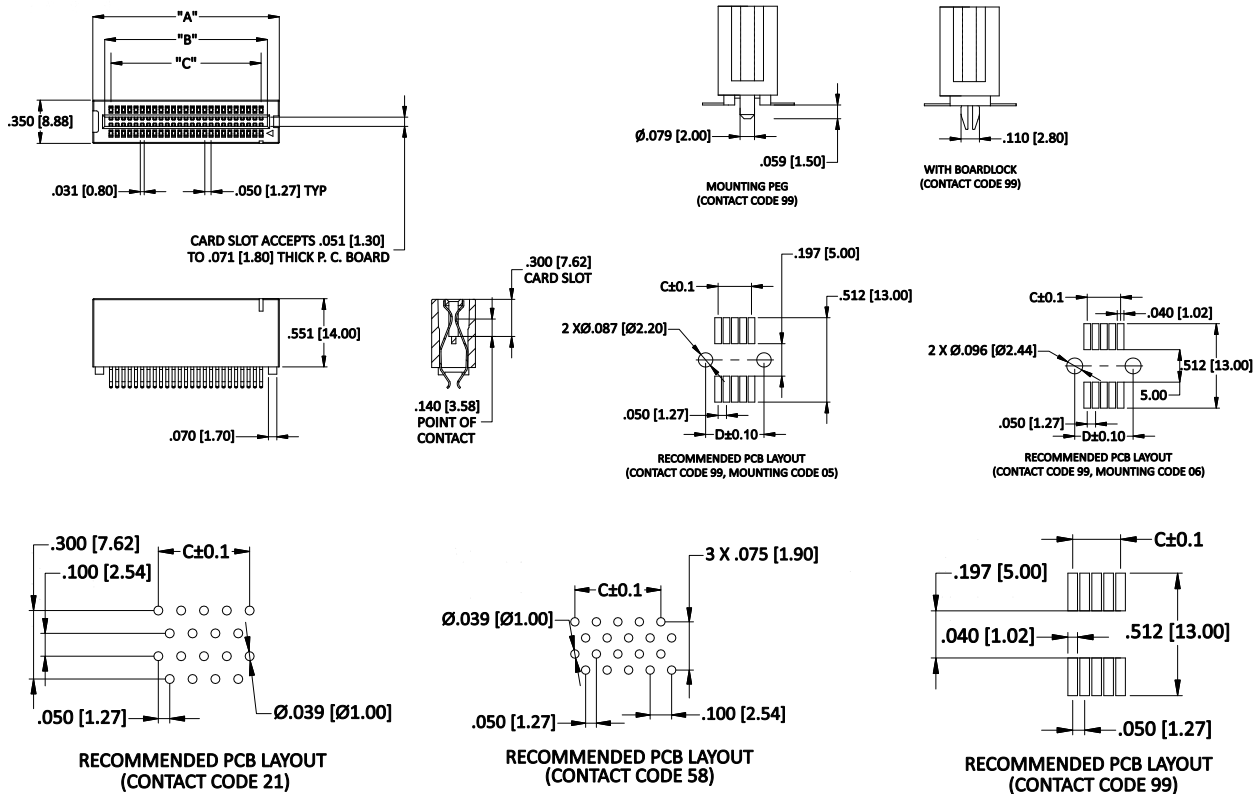
CONTACT CODE 58  
(SEE TABLE ON PAGE 4 FOR AVAILABLE SIZES)



CONTACT CODE 99

# 802 Series

Card Edge Connectors .050" (1.27mm) Pitch



NO. OF CONTACTS	"A" ±.015 (±0.38)		"B" ±.010 (±0.25)		"C" ±.015 (±0.38)	
	Inch	mm	Inch	mm	Inch	mm
4	0.34	8.64	0.15	3.81	0.05	1.27
6	0.39	9.91	0.2	5.08	0.1	2.54
8	0.44	11.18	0.25	6.35	0.15	3.81
10	0.49	12.45	0.3	7.62	0.2	5.08
12	0.54	13.72	0.35	8.89	0.25	6.35
14	0.59	14.99	0.4	10.16	0.3	7.62
16	0.64	16.26	0.45	11.43	0.35	8.89
20	0.74	18.80	0.55	13.97	0.45	11.43
22	0.79	20.07	0.6	15.24	0.5	12.70
24	0.84	21.34	0.65	16.51	0.55	13.97
26	0.89	22.61	0.7	17.78	0.6	15.24
30	0.99	25.15	0.8	20.32	0.7	17.78
32	1.04	26.42	0.85	21.59	0.75	19.05
36	1.14	28.96	0.95	24.13	0.85	21.59
40	1.24	31.50	1.05	26.67	0.95	24.13
48	1.44	36.58	1.25	31.75	1.15	29.21
50	1.49	37.85	1.3	33.02	1.2	30.48
52	1.54	39.12	1.35	34.29	1.25	31.75
60	1.74	44.20	1.55	39.37	1.45	36.83
68	1.94	49.28	1.75	44.45	1.65	41.91
70	1.99	50.55	1.8	45.72	1.7	43.18
80	2.24	56.90	2.05	52.07	1.95	49.53
100	2.74	69.60	2.55	64.77	2.45	62.23
110	2.99	75.95	2.8	71.12	2.7	68.58
120	3.24	82.30	3.05	77.47	2.95	74.93
124	3.34	84.84	3.15	80.01	3.05	77.47

# 802 Series

Card Edge Connectors .050" (1.27mm) Pitch



## Available Positions Per Contact Code



Available



Not Available

No. of Contacts	Contact Code					
	21	56	58	99		
				No Peg	With Peg	With Boardlock
4	✓	✓	✓	✓	✓	N/A
6	✓	✓	✓	✓	✓	N/A
8	✓	✓	✓	✓	✓	✓
10	✓	✓	✓	✓	✓	✓
12	✓	✓	✓	✓	✓	✓
14	✓	✓	✓	✓	✓	N/A
16	✓	✓	✓	✓	✓	✓
20	✓	✓	✓	✓	✓	✓
22	✓	✓	✓	✓	✓	N/A
24	✓	✓	✓	✓	✓	N/A
26	✓	✓	✓	✓	✓	N/A
30	✓	✓	✓	✓	✓	N/A
32	✓	✓	✓	✓	✓	N/A
36	✓	✓	✓	✓	✓	N/A
40	✓	✓	✓	✓	✓	✓
48	✓	✓	✓	✓	✓	N/A
50	✓	✓	✓	✓	✓	✓
52	✓	✓	✓	✓	✓	N/A
60	✓	✓	✓	✓	✓	✓
68	✓	✓	N/A	✓	✓	N/A
70	✓	✓	N/A	✓	✓	N/A
80	✓	✓	✓	✓	✓	✓
100	✓	✓	N/A	✓	✓	N/A
110	✓	✓	N/A	✓	✓	N/A
120	✓	✓	N/A	✓	✓	✓
124	✓	✓	N/A	✓	✓	N/A